

ERRATUM

Open Access



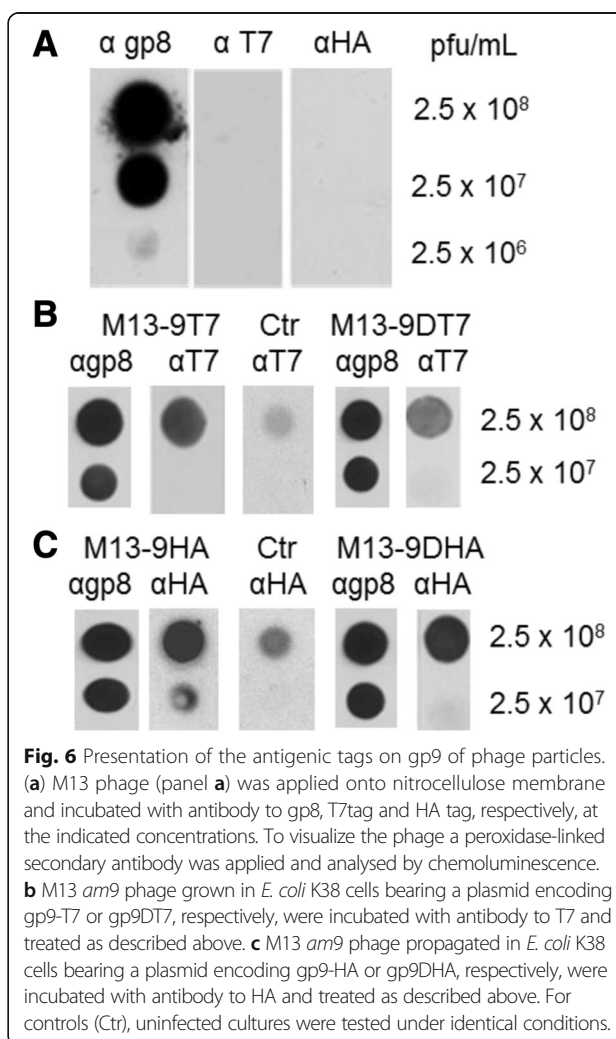
Erratum to: Membrane insertion and assembly of epitope-tagged gp9 at the tip of the M13 phage

Martin Ploss and Andreas Kuhn*

Erratum

After publication of our article [1], we became aware that during the assembly of panel A in Fig. 6 a wrong control lane (α T7) had been included. The results and conclusions are not affected by this error.

The corrected Fig. 6 is shown as follows:



Published online: 21 August 2017

Reference

1. Ploss M, Kuhn A. Membrane insertion and assembly of epitope-tagged gp9 at the tip of the M13 phage. *BMC Microbiol.* 2011;11:211.

* Correspondence: Andreas.Kuhn@uni-hohenheim.de
Institute of Microbiology and Molecular Biology, Garbenstrasse 30, University of Hohenheim, 70599 Stuttgart, Germany

